

Flat

Design by Ichiro Iwasaki.

Reference

5910.

Application

Ceiling Lamps

Installation type

Surface

Description

Flat is a ceiling lamp composed of three horizontal discs at various heights that create planes of reflected light. The discs are self-illuminated by reflected light. The Flat ceiling light has a strong graphic quality, combining structure and functionality.

Diffuser

Polycarbonate diffuser

Materials

Ceiling rose: Steel
Reflector: Aluminum
Body: Steel
Head: Aluminium

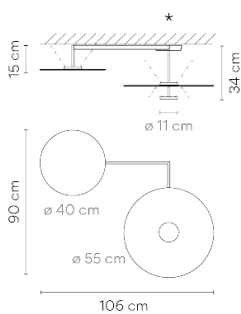
Finish

5910-10 White (NCS S 0300-N)

5910-72 White, Green L1 (NCS S 0300-N, NCS S 4005-G80Y)

5910-73 White, Grey L1 (NCS S 0300-N, NCS S 1000-N)

Sketch



Electrical characteristics

3 x LED PLATE 13,5W 700mA

Total 40.5 W



VIBIA



Light source: 2700K CRI >90 5220 lm 128 lm/W

Driver included: CC - Constant Current 700 mA 110-240V 50/60Hz

Electronic dimming DALI 1-10V PUSH

Physical characteristics

1 Box / 0.32 x 0.73 x 0.73 m. / Vol. 0.1691 m³ /

Gross weight 9.9 kg. / Net weight 9.1 kg.

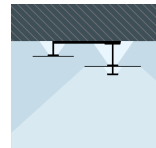
Installation and assembly

Please, see the installation manual

Light distribution

Indirect lighting

Lamp that emits an upward or backward beam that is reflected by the ceiling or wall.



Photometric data

Efficiency : 66.71 lm/W

Coordinate system : CG

Total flux : 2875.20 lm

Maximum value : 661.18 cd

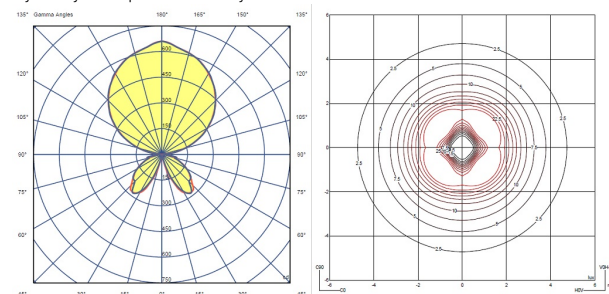
Light position : C=0.00 G=180.00

Symmetry on the planes : Double symmetrical

Isolux : floor

Light position :

X=0.00m Y=0.00m Z=2.50m



Certificates

